



Analytically Correct Engineered Systems

Bespoke sample systems designed to easily install, monitor and maintain

Model 532 System Overview

ACES™ systems are designed to meet specific application needs; ensuring sample integrity is maintained throughout the sample extraction and pre-conditioning process. The Model 532 consists of a Genie® Direct Drive™ 750 probe and a JTR-H™ four stage heated pressure regulator in a heated enclosure, and can be installed and maintained on a pressurized source without a special insertion device. **It is best suited for sampling high pressure natural gas near its dew point and/or low source temperature or at locations where the source pressure fluctuates.**

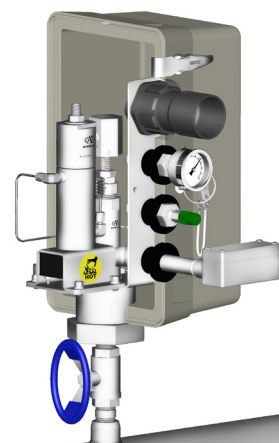
The Model 750™ probe tip contains Genie® Membrane Technology™ which separates unwanted liquid aerosols and droplets from the gas sample at process conditions. Next, the heated pressure regulator reduces the sample pressure in multiple stages; supplying a steady output pressure even when exposed to swings in supply pressure and preventing condensation from occurring as a result of Joule-Thomson (JT cooling). These combined actions produce a low-pressure, liquid-free sample that is representative of the source and ready for transport to analyzer.

Vertical Style Enclosure

The vertical style enclosure is easy to use and allows the sample pressure and enclosure temperature to be monitored at a quick glance, without having to remove the enclosure. Additionally the regulator, fittings, and other accessories are mounted to a hardware bracket that allows complete removal of the sample probe and/or enclosure without disturbing any of the components mounted on the bracket.

Technical Specifications

Maximum pressure rating	3,750 psig (258.6 Bar)
Outlet pressure range	0-50 psig (0-3.4 bar) standard, others available
Temperature range	-15 °F (-26.1 °C) to 185 °F (85 °C)
Process connection	3/4" and 1" NPT standard, 1.5" NPT and flanged available
Probe lengths	L: 8" (20cm), 12" (31cm), 18" (46cm), 24" (61cm), 36" (91cm), 48" (122cm) Custom lengths from 9" to 48" (22.8 to 121.9 cm) available
Port sizes	Outlet: 1/8" Tube Fitting Relief valve vent: 1/4" NPT
Power requirements	110 to 265 VAC, 80W or 24VDC, 25W
Conduit connection	1/2" NPT
Electrical component approval	CSA: Class 1, Division 1, Groups C&D, T3 Heater ATEX: Zone 1, II 2 GD Ex d 11C
Wetted materials	Probe and regulator machined parts: 316 stainless steel /NACE compliant and Kevlar® threaded bushing All other metal parts: stainless steel / NACE compliant Tubing & fittings: 316 stainless steel Sealing material: PTFE/Fluoroelastomer/Neoprene rubber standard, others available Membrane: BTU/Type 6 - inert



Product Brief

Applications

- Continuous gas sampling in any process industry:
 - High pressure sources
 - Natural gas having a high moisture or hydrocarbon dew point
 - Natural gas storage facilities

Note: This system is not recommended for sample streams containing Hydrogen in concentrations above the lower explosive limit (LEL).

Key Features

- Can be installed and maintained on a pressurized source
- Genie® Membrane Technology™ allows for liquid rejection inside of the pipe at process conditions, preserving sample integrity
- Heated, multi-stage pressure regulator and enclosure help to prevent condensation
- Sample pressure and enclosure temperature can be monitored externally
- Regulator, fittings, tubing, etc. are mounted on a pre-assembled hardware bracket that can be left in place while the probe is maintained or easily replaced for critical sampling applications where down time is not allowed.



geniefilters.com

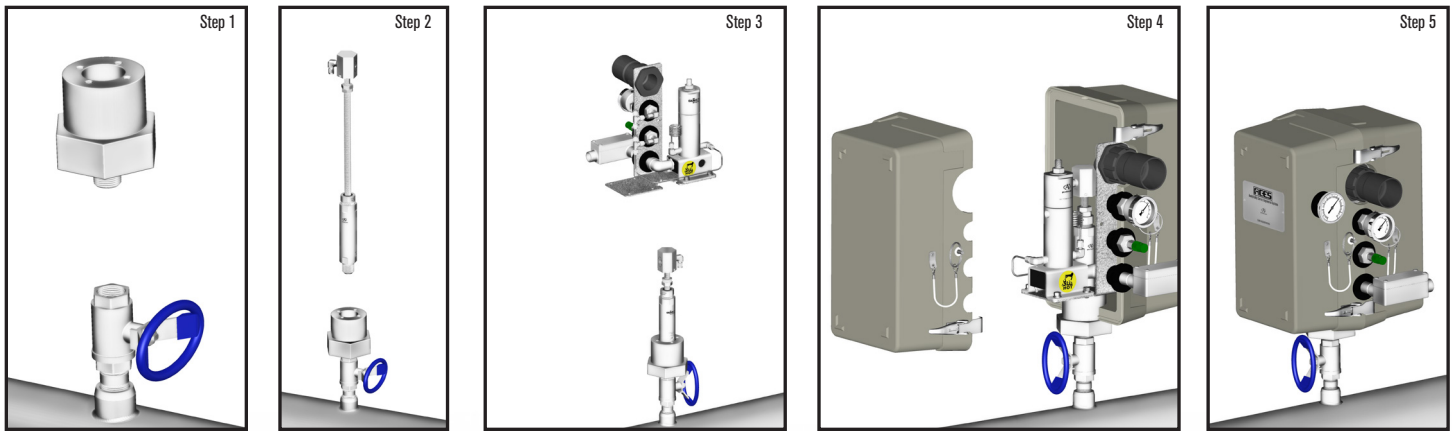
DASTEC S.R.L.

Representantes / Distribuidores Exclusivos

Buenos Aires, Argentina
Tel.: (54 - 11) 5352-2500
Email: info@dastecsr.com.ar
Web: www.dastecsr.com.ar

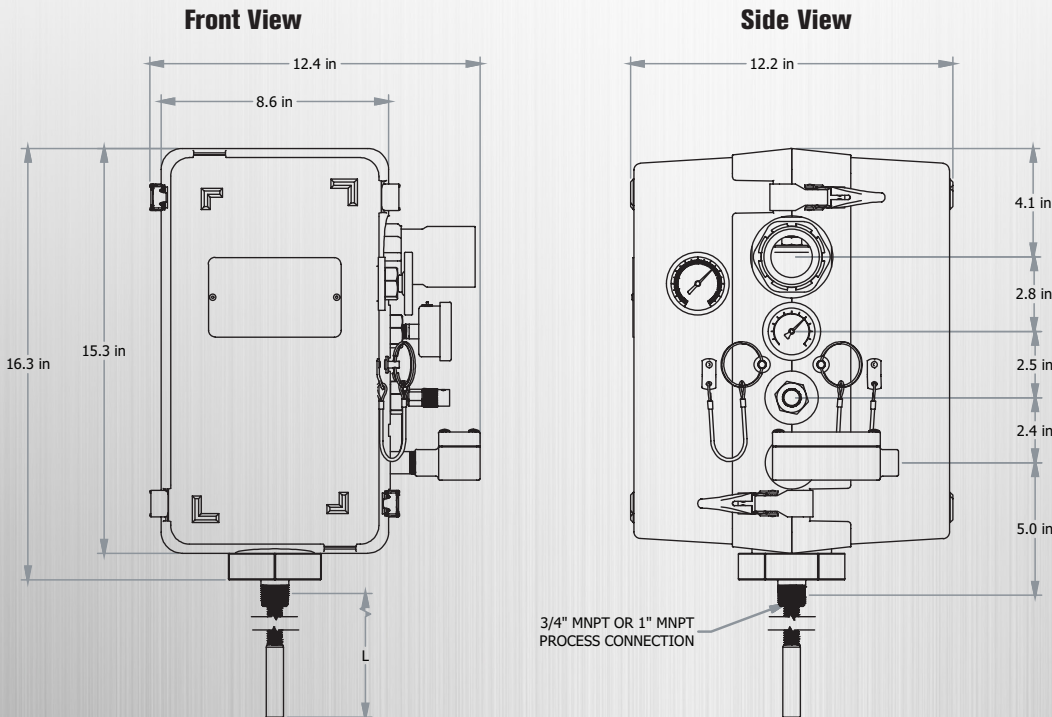
Analyzer Sampling Solutions > Moisture & Corrosion Control > Knowledgeware

Installation Overview



1. Mount the enclosure coupling to an existing process valve.
2. Thread the 750 probe into the coupling.
3. Mount the hardware bracket with pre-assembled parts to the enclosure coupling.
4. Secure the enclosure around the probe and hardware bracket assembly.
5. The enclosure is now ready for the power and sample tubing to be connected.

Dimensions



DASTEC S.R.L.

Representantes / Distribuidores Exclusivos

Buenos Aires, Argentina

Tel.: (54 - 11) 5352-2500

Email: info@dastecsr.com.ar

Web: www.dastecsr.com.ar

A+ Corporation is the leader in Analytically Correct™ Sample Extraction and Conditioning Systems.

Contact us for expert product application assistance.

sales@geniefilters.com > 225.644.5255 > Fax 225.644.3975

41041 Black Bayou Road, Gonzales, LA 70737 An ISO 9001:2008 Certified Company

Patents pending. Genie®, ACES®, Analytically Correct Engineered Systems™ are trademarks or registered trademarks of A+ Corporation, LLC. All other referenced trademarks are the property of their respective owners. © 2012 A+ Corporation. All rights reserved. ACES-532-PS_1215.